



EBSCOhost平台基本檢索使用教學



Creating a Basic Search

on





EBSCOhost 是一個強大的研究平台，提供豐富的資料庫，在此教學中，我們將進行基本檢索的說明。首先，我們會在基本檢索的頁面，使用global warming當關鍵字進行搜尋，在搜尋之前，您也可以點擊檢索選項(Search Options)，檢視是否有合適可用的項目。

檢索選項

[重設](#)

檢索模式與擴增詞

檢索模式 [?](#)

- ☒ 布林邏輯/詞組
- ☐ 尋找全部檢索詞語
- ☐ 尋找任何檢索詞語
- ☐ SmartText 檢索 [提示](#)

Apply related words

☐

Also search within the full text of the articles

☐

套用相等主題

☐

縮小您的結果

全文

☒

學術 (同儕評鑑) 期刊

☒

出版品

頁數

 ▾

有參考資料

☐

出版日期

 ▾ 年: - ▾ 年:

出版品類型

全部
Periodical
Newspaper
Book

圖片快速檢視

☐

圖片快速檢視類型

- | | |
|-------------------------------|-----------------------------|
| <input type="checkbox"/> 黑白照片 | <input type="checkbox"/> 圖表 |
| <input type="checkbox"/> 彩色照片 | <input type="checkbox"/> 圖式 |
| <input type="checkbox"/> 圖形 | <input type="checkbox"/> 附圖 |
| <input type="checkbox"/> 地圖 | |

[檢索](#)

在檢索選項(Search Options)中，您可以選定合適的檢索模式來限制或擴展您的搜尋結果，您可能也留意到，有只顯示全文(Full Text)的選項、限定查找同儕評鑑(Peer Reviewed)的期刊，或是查找特定出版品的內容，當您選定完成後，只要按搜尋鍵(Search)即可。



檢索中： Academic Search Complete | 選擇資料庫

global warming

檢索

基本檢索 進階檢索 檢索歷史 ▸

歡迎使用EBSCOhost資料庫

縮小檢索結果

目前的檢索項目 ▾

布林邏輯/詞組：

global warming

設限值

全文 ☒

學術 (同儕評鑑) 期刊 ☒

限制為 ▾

☒ 全文

☐ 有參考資料

☒ 學術 (同儕評鑑) 期刊

1978 出版日期 2017

顯示更多

選項集

資料類型 ▾

☒ 所有結果

☐ 學術刊物 (9,069)

☐ 書籍評鑑 (273)

檢索結果： 1 - 10 / 9,415

相關性 ▾ 頁面選項 ▾ 共享 ▾

1. Consequences of **Global Warming** of 1.5 °C and 2 °C for Regional Temperature and Precipitation Changes in the Contiguous United States.



學術期刊

By: Karmalkar, Ambarish V.; Bradley, Raymond S. *PLoS ONE*. 1/11/2017, Vol. 12 Issue 1, p1-17. 17p. DOI: 10.1371/journal.pone.0168697.

The differential **warming** of land and ocean leads to many continental regions in the Northern Hemisphere **warming** at rates higher than the **global** mean temperature. Adaptation and conservation effort...

主題: **Global warming**; Precipitation (Meteorology); Atmospheric models; Emissions (Air pollution); United States

PDF 全文 (4.1MB)

2. Estimating the Continental Response to **Global Warming** Using Pattern-Scaled Sea Surface Temperatures and Sea Ice.



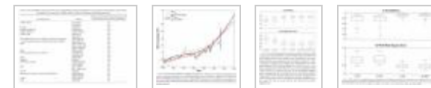
學術期刊

By: BICHET, ADELINE; KUSHNER, PAUL J.; MUDRYK, LAWRENCE. *Journal of Climate*. Dec2016, Vol. 29 Issue 24, p9125-9139. 15p. 1 Chart, 3 Graphs, 7 Maps. DOI: 10.1175/JCLI-D-16-0032.1.

Better constraining the continental climate response to anthropogenic forcing is essential to improve climate projections. In this study, pattern scaling is used to extract, from observations, th...

主題: Climatic changes; **Global warming**; Ocean temperature; Sea ice; Aerosols (Sprays) -- Environmental aspects

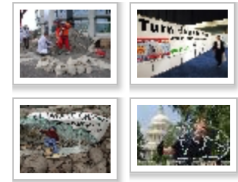
顯示全部 11 圖片



PDF 全文 (8.7MB)

3. Impact of Regional Atmospheric Cloud Radiative Changes on Shifts of the Extratropical Jet Stream in Response to **Global Warming**.

相關圖片 ▾



尋找更多

Library News ▾

[alert!](#)

[Keep up to date with your favourite publications using journal alerts!](#)

[Download our EBSCOhost](#)

按完搜尋(Search)後，搜尋結果頁面即會顯示，左側頁面的選項，可以讓您縮小您的搜尋結果，您還可以檢視資料類型(Source Types)，篩選出學術期刊(Academic Journals)、雜誌(Magazines)或報紙(Newspapers)等您需要的文獻類型。



檢索中：Academic Search Complete | 選擇資料庫

global warming

檢索

基本檢索 進階檢索 檢索歷史

歡迎使用EBSCOhost資料庫

◀ 結果清單 | 縮小範圍檢索 | 2 之 9,415 ▶

Estimating the Continental Response to Global Warming Using Pattern-Scaled Sea Surface Temperatures and Sea Ice.

作者: BICHET, ADELINE¹ adeline.bichet@lgge.obs.ujf-grenoble.fr
KUSHNER, PAUL J.²
MUDRYK, LAWRENCE²

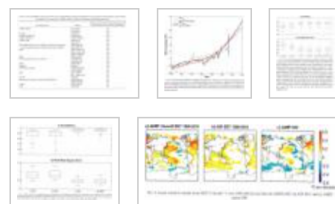
資料來源: Journal of Climate. Dec2016, Vol. 29 Issue 24, p9125-9139. 15p. 1 Chart, 3 Graphs, 7 Maps.

文件類型: Article

主題術語: *Climatic changes
*Global warming
*Ocean temperature
*Sea ice
*Aerosols (Sprays) -- Environmental aspects

摘要: Better constraining the continental climate response to anthropogenic forcing is essential to improve climate projections. In this study, pattern scaling is used to extract, from observations, the patterned response of sea surface temperature (SST) and sea ice concentration (SICE) to anthropogenically dominated long-term **global warming**. The SST response pattern includes a **warming** of the tropical Indian Ocean, the high northern latitudes, and the western boundary currents. The SICE pattern shows seasonal variations of the main locations of sea ice loss. These SST-SICE response patterns are used to drive an ensemble of an atmospheric general circulation model, the National Center for Atmospheric Research (NCAR) Community Atmosphere Model, version 5 (CAM5), over the period 1980-2010 along with a standard AMIP ensemble using observed SST-SICE. The simulations enable attribution of a variety of observed trends of continental climate to **global warming**. On the one hand, the **warming** trends observed in all seasons across the entire Northern Hemisphere extratropics result from **global warming**, as does the snow loss observed over the northern midlatitudes and northwestern Eurasia. On the other hand, 1980-2010 precipitation trends observed in winter over North America and in summer over Africa result from the recent decreasing phase of the Pacific decadal oscillation and the recent increasing phase of the Atlantic multidecadal oscillation, respectively, which are not part of the **global warming** signal. The method holds promise for near-term decadal climate prediction but as currently framed cannot distinguish regional signals associated with oceanic internal variability from aerosol forcing and other sources of short-term forcing. [ABSTRACT FROM AUTHOR]

圖片



前往所有 11 圖片 >>

工具

新增至資料夾

列印

電子郵件

儲存

引用

匯出

建立註記

固定連結

共享

詳細的記錄

MARC 記錄

PDF 全文 (8.7MB)

尋找相似的結果
使用 SmartText 檢索。

在搜尋結果畫面中，點擊文章的標題，即可進入詳細記錄的畫面中，在此，您可以使用列印、電子郵件寄送、儲存、引用、匯出引用資訊等功能，還可以將這筆記錄添加到個人資料夾(Folder)中，如果您需要長久使用個人資料夾，你需要點擊畫面右上方的登入(Sign In)，並填寫完註冊表格後，即可馬上免費使用個人資料夾功能。



詳細的記錄

MARC 記錄

PDF 全文

引用參考 (5)

尋找相似的結果
使用 SmartText 檢

support.ebsco.com/help/?int=ehost&lang=en&feature_id=&TOC_ID=Always&SI=0&BU=0&GU=1&PS=0&ver=&dbs=a9h

EBSCOhost

Print Close

Enter keyword

All words Search

Welcome

- Browser Requirements
- Choosing Databases
- Setting Preferences
- Ask-A-Librarian
- Accessibility
- EBSCOhost Tutorials
- EBSCOhost iPhone and Android Application
- Reaching Technical Support

Translation

- Changing the Language of the Interface
- Translating an Article

eBooks and Audiobooks

- Audiobooks
- eBooks
- Dictionary

Searching

- Basic Search
- Advanced Search – Guided Style
- Search History
- Improving Search Results
- Limiters
- Multi-Database Limiters
- Booleans
- Expanders
- Images
- Image Quick View
- Citation Matcher
- Field Codes
- Including Phrases in a Search
- Proximity Searches
- Wildcard and Truncation Symbols
- Company Profiles
- Videos
- NAICS by Description
- NAICS in SIC Code Order

EBSCOhost Research Databases

EBSCOhost is a powerful online reference system accessible via the Internet. It offers a variety of proprietary full text databases and popular databases from leading information providers.

The comprehensive databases range from general reference collections to specially designed, subject-specific databases for public, academic, medical, corporate and school libraries.

[View A Tutorial On This Topic »](#)

EBSCO Support Site

EBSCO's [Support Site](#) is available 24 hours a day, 7 days a week. Our FAQ database, [tutorials](#), and user guides can provide answers to your technical questions.

EBSCO Customer Support Representatives are also available by [phone](#) and [e-mail](#) 24 hours a day, Monday through Friday, as well as Saturday and Sunday from 9 a.m. to 5 p.m. (US EST).

How to Use Help

- When the Help icon  appears, you can click the icon and help for the screen you are on will display.
- To obtain help for the database(s) you are searching, click the Help icon  to the right of the **Find** field and click on the Database name at the bottom of the left-hand side of the Help window. Database help is also available from the Choose Databases window.
- To view the entire Help System, click the [Help](#) link at the top right-hand corner of the screen.

Note: The recommended screen resolution for EBSCOhost is 1024 x 768.

[« Back](#)

歡迎使用EBSCOhost資料庫

工具

- 新增至資料夾
- 列印
- 電子郵件
- 儲存
- 引用
- 匯出
- 建立註記
- 固定連結
- 共享

在使用過程中，您可以點擊平台右上方的幫助 (Help) 連結，取得相關的說明。



For more information, visit the EBSCO Support Site
<http://support.ebsco.com>

若需要取得更多資訊，歡迎到EBSCO的支援服務網站